



Thrive Monterrey Home Plan

Starting at \$281,699

SQ FT: 1,743

Beds: 3

Baths: 2.0

Garage: 2 Standard



Elevation A



Elevation B

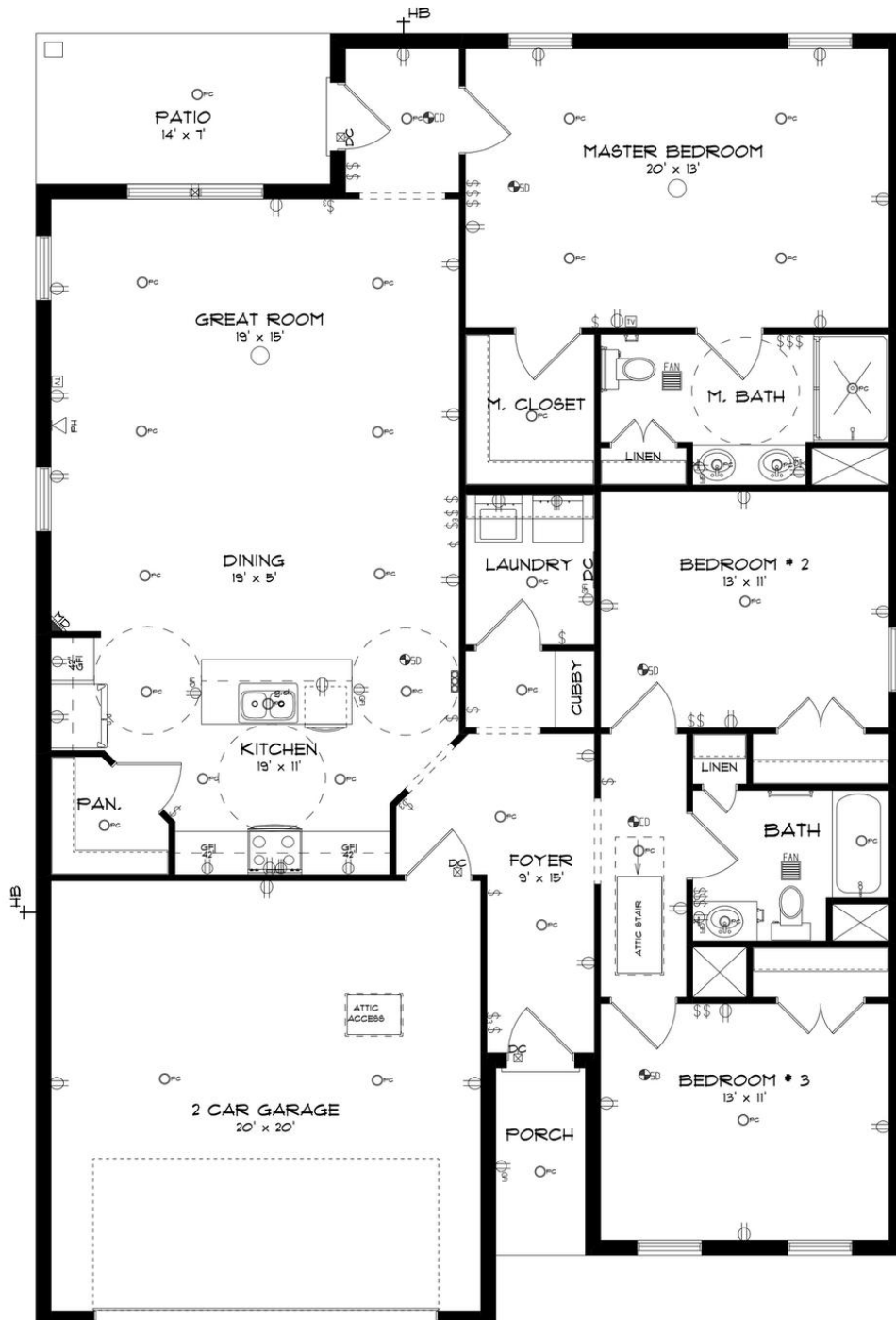
ABOUT THIS PLAN

The Thrive "Monterrey" floor plan is a handicap accessible design and includes 3 bedrooms and 2 bathrooms. The 2-car garage opens directly into the large foyer. The Thrive "Monterrey" boasts an open concept in the dining room, great room and kitchen. Just off the great room, the master suite creates a serene oasis complete with a walk-in closet and bathroom. With 2 other bedrooms and bathroom, this plan offers ample space for all your needs.

...Read More Online

Prices, plans, dimensions, features, specifications, materials, and availability of homes or communities are subject to change without notice or obligation. Illustrations are artists depictions only and may differ from completed improvements. All prices subject to change without notice. Please contact your sales associate before writing an offer.

FIRST FLOOR



Prices, plans, dimensions, features, specifications, materials, and availability of homes or communities are subject to change without notice or obligation. Illustrations are artists depictions only and may differ from completed improvements. All prices subject to change without notice. Please contact your sales associate before writing an offer.



Contact Our Sales Associate
Taylor Long
334-645-9604 | hello@stonemartinbuilders.com

PLAN GALLERY

Prices, plans, dimensions, features, specifications, materials, and availability of homes or communities are subject to change without notice or obligation. Illustrations are artists depictions only and may differ from completed improvements. All prices subject to change without notice. Please contact your sales associate before writing an offer.